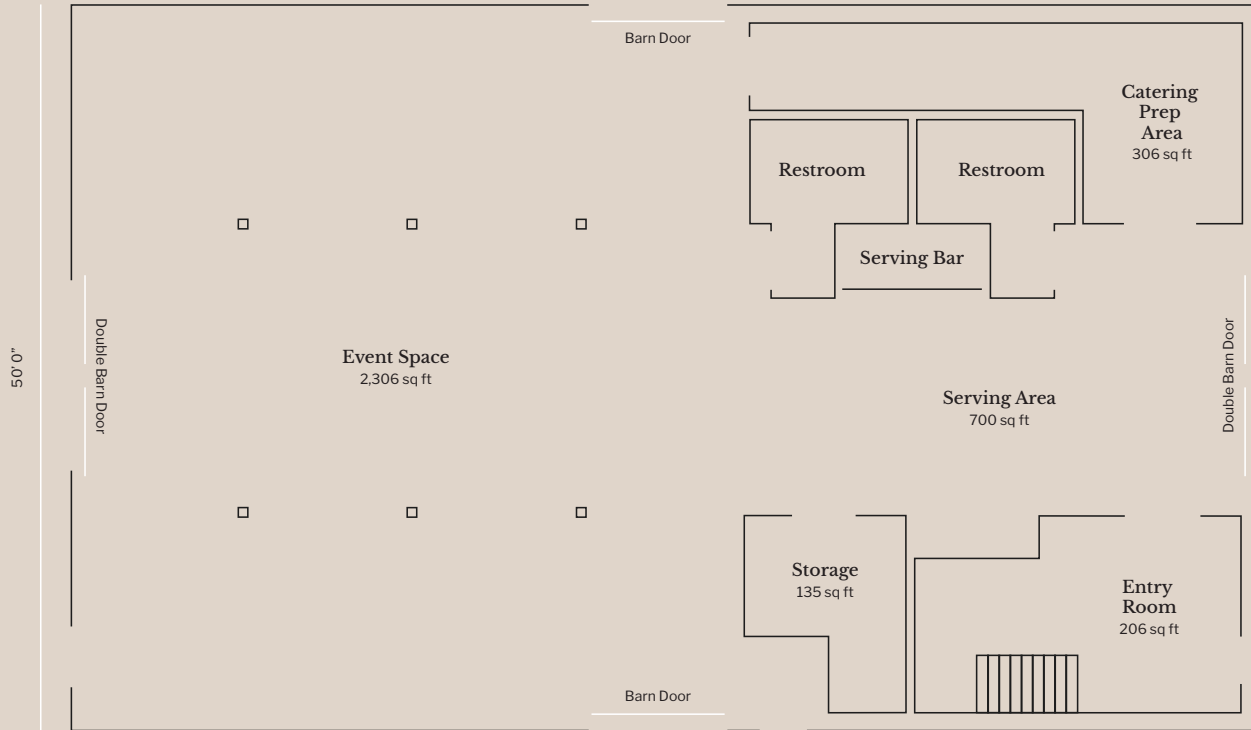


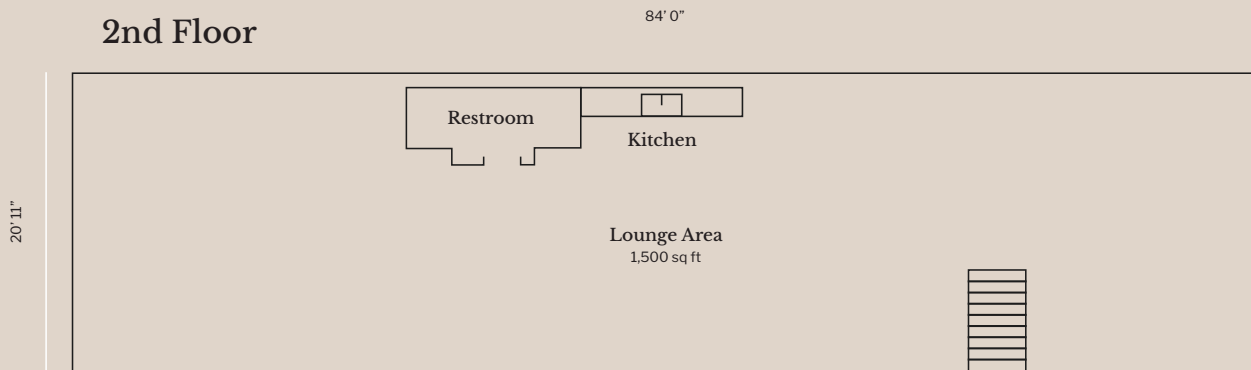
# the farm

Fresh air. A cabin, a barn, wide open meadow and sky. Flanked by creek and country road, there's space to wander, and room to breathe. Hospitality at The Farm is straightforward and considered, offering a range of spaces that work together: authentic structures, open-air gathering areas, spaces built for shared moments.

## Ground Floor



## 2nd Floor



## Amenities

- |   |  |                                   |
|---|--|-----------------------------------|
| 100 Black Farmhouse Resin Cross Back Chairs   | 400 lb Ice Machine                         | Farm Grounds Access               |
| 10 60" Round Tables                           | 5,700 sq ft Indoor Space                   | 30 Acre Stream Valley Setting     |
| 5 84" x 30" Rectangular Tables                | 3,000 sq ft Gathering Space                | Beehives                          |
| 10 31" Round Cocktail Tables                  | 1,500 sq ft Lounge Area                    | Native Flowers                    |
| Catering Prep Area                            | Outdoor Gathering + Cooking Pavillion      | Clover + Alfalfa Pastures         |
| Stainless Steel Work Areas                    | Outdoor Firepit                            | Wi-Fi                             |
| Avantco HEAT Full Size Heated Holding Cabinet | 30amp Outdoor Circuits                     | Ample Parking                     |
| Traulsen Two Section Reach-In Refrigerator    | Hand-Hewed White Oak Log Cabin on Property | Central Location with Easy Access |

For more information, visit [hchfarm.com](http://hchfarm.com).